

Cover Page



Universiteit Leiden



The handle <http://hdl.handle.net/1887/33832> holds various files of this Leiden University dissertation

**Author:** Krens, Lisanne

**Title:** Refining EGFR-monoclonal antibody treatment in colorectal cancer

**Issue Date:** 2015-07-02



# *Chapter 6*

J.M. Baas\*, L.L. Krens\*, M.M. Bos, J.E. Portielje, E. Batman,  
T. van Wezel, H. Morreau, H.J. Guchelaar and H. Gelderblom

\*Contributed equally

Accepted



*Safety and efficacy of the addition  
of simvastatin to panitumumab in  
previously treated KRAS mutant  
metastatic colorectal cancer patients*



## Abstract

### *Introduction*

Panitumumab has proven efficacy in patients with metastatic or locally advanced colorectal cancer patients provided they have no activating *KRAS* mutation in their tumour. Simvastatin blocks the mevalonate pathway and thereby interferes with the post-translational modification of *KRAS*. We hypothesize that the activity of the RAS induced pathway in patients with a *KRAS* mutation might be inhibited by simvastatin. This would theoretically result in increased sensitivity to panitumumab, potentially comparable to tumours with wild type *KRAS*.

### *Methods*

A Simon two-stage design single-arm, phase II study was designed to test the safety and efficacy of the addition of simvastatin to panitumumab in colorectal cancer patients with a *KRAS* mutation after failing fluoropyrimidine, oxaliplatin and irinotecan based therapy. The primary endpoint of this study was the proportion of patients alive and free from progression 11 weeks after the first administration of panitumumab, aiming for at least 40% which is comparable to though slightly lower than in *KRAS* wild-type patients in this setting. If this 40% was reached then the study would continue into the second step up to 46 patients. Explorative correlative analysis for mutations in the *KRAS* and related pathways was performed.

### *Results*

One of 14 patients was free from progression at the primary endpoint time. Median progression free survival was 8.4 weeks, median overall survival status was 19.6 weeks.

### *Conclusion*

We conclude that the concept of mutant *KRAS* phenotype expression modulation with simvastatin was not applicable in the clinic.

## Introduction

The epidermal growth factor receptor (EGFR) inhibitors panitumumab and cetuximab have proven efficacy in third-line treatment of colorectal cancer (CRC) patients failing 5-FU, oxaliplatin and irinotecan based regimens [1;2], but only in patients with tumours not harbouring an activating *KRAS* mutation in codon 12, 13 or 61 [3-5] or, more recently published, several other *RAS* mutations [6]. At the time of design of this study the available literature showed that *KRAS* mutations are found in tumour tissue of 40% of CRC patients, at least 90% located on codon 12 or 13 of the *KRAS* gene [4]. Patients harbouring these mutations in their tumour were left with little therapeutic options after failing standard therapy. This raised the question whether *KRAS* mutations can be modulated, thereby making *KRAS* mutated tumours sensitive to EGFR inhibitor therapy. The possible target for the simvastatin modulation is the mevalonate pathway, as we have previously discussed [7].

Statins (HMG-CoA-reductase inhibitors) inhibit cholesterol synthesis by inhibiting the mevalonate pathway, a metabolic cascade also responsible for syntheses of farnesylated and geranylgeranylated proteins (C15 and C17), both essential for post-translation activation of the *KRAS* protein [8]. As statins also inhibit the synthesis of C15 and C17, they may inhibit post-translational activation of *RAS* proteins. Therefore, statins may inhibit the expression of the mutant *KRAS* phenotype and normalize the phenotype into *KRAS* wild type, rendering sensitivity to panitumumab.

This single-arm, multicenter phase II study was designed to test safety and efficacy of the addition of simvastatin to panitumumab in previously treated CRC patients with a *KRAS* mutation in their tumour.

## Methods

### *Patients*

Eligible patients had advanced or metastatic colorectal cancer with a mutation in codon 12, 13 or 61 of the *KRAS* gene (either on tissue of the primary tumour or of a metastasis), after failure of fluoropyrimidine, oxaliplatin and irinotecan based regimens, or after failure of oxaliplatin therapy and unable to tolerate irinotecan. In patients with progressive disease within six months after start of adjuvant therapy, these therapies were considered to be treatment for metastatic disease.

Other eligibility criteria included: age 18 years or older, World Health Organisation (WHO) performance score of 0 to 2 and progression of disease in the three months prior to inclusion. Exclusion criteria included symptomatic brain metastases, previous treatment with EGFR inhibitors, history of toxicity during statin use or an other malignancy during the past four years (with the exception of non-melanoma skin cancer and adequately treated pre-invasive carcinoma of the cervix).

The study protocol was approved by the Ethics Committees of all participating hospitals and all study procedures were in accordance with the 1964 Helsinki declaration and its later amendments. Written informed consent from the patient was obtained prior to any study-related interventions.

### *Treatment schedule*

Panitumumab 6 mg/kg was administered intravenously once every two weeks. The first administration was scheduled at least one week after start of simvastatin. Simvastatin 80 mg once daily was started at baseline and continued throughout entire study participations, though dose reductions or temporary interruptions were allowed in case of toxicity. This starting dose of simvastatin was chosen for the following reasons: inhibitory effect on the mevalonate pathway (and not high dose antitumour effect by itself), tolerability and the need for continuous administration of the statin during the entire study. Statins in cancer therapy have been studied in clinical trials in solid [9-19] and haematologic [20-22] malignancies, both as monotherapy as well as additional to standard therapy. Statin doses from 20 mg/day up to 35 mg/kg/day were used in various intermittent schedules. In continuous dosing schedules, simvastatin was used at a maximum of 80mg/day. The aim of this study was to modulate KRAS during the entire treatment with panitumumab, therefore a continuous exposure to simvastatin was needed and a dose of 80 mg/day was selected in order to obtain maximum effect while minimizing the risk of toxicity. Patients who were already using statins prior to inclusion had to switch to simvastatin. Treatment was continued until progression of disease according to Response Evaluation Criteria In Solid Tumors (RECIST) version 1.1, clinical signs of progression according to the investigators assessment, unacceptable toxicity, signs of rhabdomyolysis or panitumumab toxicity requiring interruption of treatment.

Tumour response was measured seven weeks after baseline and every two cycles thereafter using CT-scans and according to RECIST version 1.1. These intervals were based on historical data on PFS of KRAS wild type colorectal cancer patients treated with panitumumab [3]. Scans of patients free from progression at the time of primary endpoint were centrally reviewed. All patients were followed for survival once every three months after termination of study participation. Adverse events were monitored on an ongoing basis per cycle and toxic effects were categorized using the NCI Common Terminology Criteria for Adverse Events (CTCAE), Version 3.0.

### *Endpoints*

Primary endpoint was the proportion of patients alive and free from progression at 11 weeks after the first administration of panitumumab in combination with simvastatin. Our hypothesis was that at least 40% of patients would be free from progression at 11 weeks, comparable to though slightly lower than the proportion of KRAS wild type patients that remains free from progression at 11 weeks when treated with panitumumab [3].

Secondary endpoints were overall survival (OS), objective response rate (ORR), progression free survival (PFS), and safety of simvastatin combined with panitumumab in this population and to evaluate the correlation between skin toxicity and response to treatment. Exploratory endpoints were to investigate the role of cholesterol as a possible biomarker during this treatment and whether *PIK3CA* status correlates with response to panitumumab in this population.

### *Mutational analysis*

KRAS mutational status was reconfirmed centrally, testing for the seven most frequent mutations in codon 12 and 13 as described in detail elsewhere[23]. In addition, we tested for the three most common mutation in the *PIK3CA* gene; in exon 9 (c.1624G>A (p.E542K) and c.1633G>A (p.E545K)) and exon 20 (c.3140A>G (p.H1047R)). Though KRAS and BRAF mutations are known to be mutually exclusive[24], all tissue was tested for the activating hotspot mutation p.V600E.

### *Design and statistics*

This phase II, single-arm, multi-center study was performed using a Simon two-stage design [25]. In the first stage, 15 patients were included, after which an interim analysis was performed. Results of this analysis would determine whether the combination of simvastatin and panitumumab may have clinical benefit in this group of CRC patients, thus justifying the second stage up to 46 patients in total.

The sample size was chosen based on previously published data of CRC patients with *KRAS* wild type tumours treated with panitumumab [3], aiming for at least 6 out of 15 patients free from progression at 11 weeks after start of combination panitumumab and simvastatin treatment in patients with *KRAS* mutant type tumours. Combined with an alpha of 0.05 and a power of 0.80, an interim size of 15 and a total sample size of 46 patients were required. An interim analysis was to be performed after the inclusion of 15 evaluable patients. Only when at least 40% (i.e. six patients) were free from progression at the 11 weeks, another 31 patients would be enrolled during the second stage of the study.

## Results

### *Patients*

From April 2010 to May 2012, 17 patients were included. Notably, 17 instead of 15 patients were included, due to the fact that two patients were considered to be unevaluable (both showed clinical signs of progression prior to the first infusion of panitumumab). However, after review, three instead of two patients were unevaluable (Figure 1). The third unevaluable patient had a second malignancy which was first discovered at the baseline CT-scan. As none of the three unevaluable patients received panitumumab, all three were excluded in the efficacy and safety analysis. Baseline characteristics of the remaining 14 patients are listed in Table 1. One patient only received oxaliplatin/5FU based chemotherapy prior to study participation. None were receiving any kind of statin prior to study participation. Table 2 shows type of *KRAS* mutation per patient, along with *PIK3CA* mutational status. Tumour tissue was available in all but one patient. Two patients had a *PIK3CA* mutation on tumour tissue, one located in exon 20 and one in exon 9. Eleven patients had a *KRAS* codon 12 mutant tumour and two patients had a *KRAS* codon 13 mutant tumour.

### *Efficacy*

One study participant was free from progression at the primary endpoint time. The percentage of patients alive and free from progression 11 weeks after the first administration of panitumumab is therefore 7%. The predefined criteria to proceed to the second stage of the study were not met, therefore no further patients were included. Time to progression in this particular patient was 17 weeks, median time to progression was 8.4 weeks (mean 8.7, range 5-17, Figure 2 panel A). Median overall survival was 19.6 weeks (mean 24.2, range 8.3-71.1, Figure 2 panel B). Objective response rate was 0% as none of the patients had a (partial) remission. Analysis of a correlation between skin toxicity and efficacy was not feasible due to absence of responders.

Exposure to panitumumab was equal in all patients; none required dose reductions or delays. Two patients needed 50% dose reduction of simvastatin, both after the second infusion of panitumumab. Reason for dose reduction was elevation of liver enzymes in one patient. In the other patient reason for dose reduction was not specified, though liver enzymes were stable in this specific patient and myalgia was not reported.

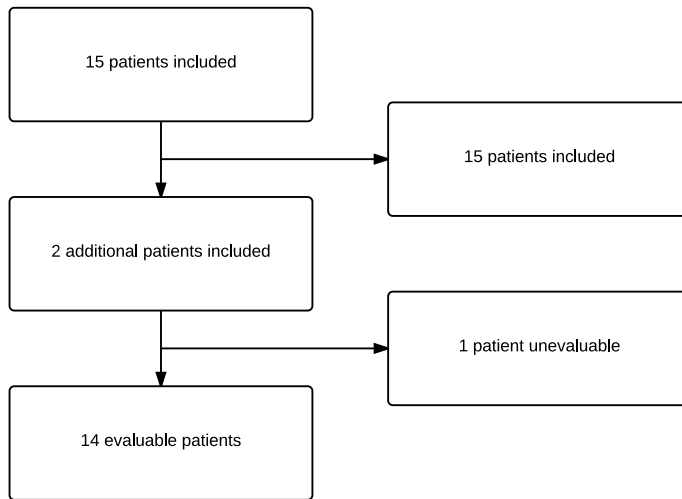


Figure 1: Flow chart of the inclusion of patients

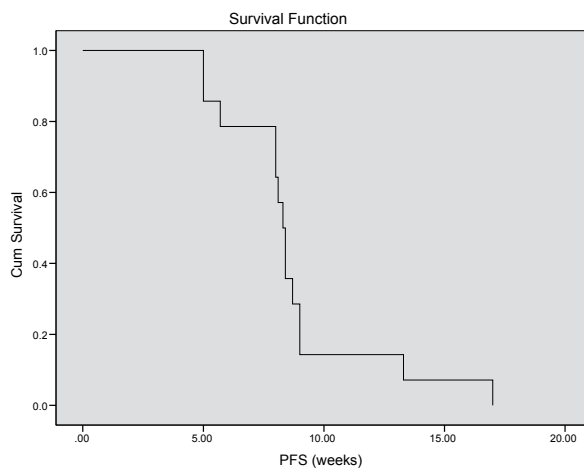
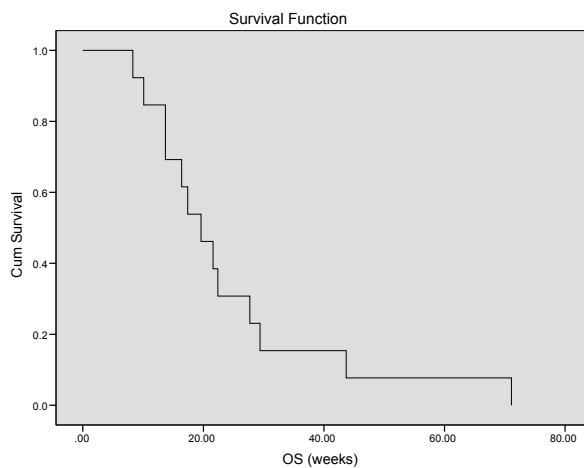
Table 1: Baseline characteristics

<b>Age – years</b>	
Mean	59
Range	33 – 77
<b>Gender – n (%)</b>	
Male	5 (36)
Female	9 (64)
<b>WHO performance score – n (%)</b>	
0	7 (50)
I	5 (36)
II	2 (14)
<b>Site of primary tumour – n (%)</b>	
Colon	8 (57)
Rectum	6 (43)
<b>Prior lines of chemotherapy – n (%)</b>	
1	1 (7)
2	8 (57)
3	2 (14)
Not reported	3 (22)
<b>Prior surgery – n (%)</b>	9 (64)
<b>Prior radiotherapy – n (%)</b>	5 (36)



**Table 2:** Mutational status per patient

Study nr	<i>KRAS</i>	<i>PIK3CA</i>
1	G12V	Wild type
2	G12D	Wild type
3	G12C	Wild type
4	G12V	Wild type
5	G12D	Wild type
7	G12V	Wild type
8	G12A	Wild type
9	G12A	Wild type
10	G12V	Mutation in exon 20
11	G12D	Wild type
13	G13D	Mutation in exon 9
14	G13D	Wild type
15	G12V	Wild type
17	<i>missing</i>	<i>missing</i>

**Figure 2a:** Kaplan meier plot for progression free survival in weeks of CRC patient treated with 80 mg of simvastatin in combination with panitumumab.**Figure 2b:** Kaplan meier plot for overall survival in weeks of CRC patient treated with 80 mg of simvastatin in combination with panitumumab.

### Toxicity

The most frequently reported adverse events on study were fatigue (n=10), anemia (n=9) and hypomagnesaemia (n=9). The incidence of severe adverse events is provided in Table 3. Skin toxicity occurred in 10 patients. Acneiform rash was reported in seven patients, none had grade 3 acneiform rash, though one case of grade 3 folliculitis was reported. Myopathy occurred in three patients. Grade 3 myopathy was reported in one patient and the patient terminated study participation for this reason. Elevation of CK was reported in all three patients with myopathy (up to 3917U/l in one patient) and in two additional patients.

**Table 3** Severe (grade 3) adverse events

Event	Number (percentage)
Fatigue	3 (21)
Nausea	2 (14)
Pruritis	1 (7)
Vomitus	1 (7)
Myalgia	1 (7)
Folliculitis	1 (7)
Paronychia	1 (7)

## Discussion

To the best of our knowledge this is the first clinical trial of combined treatment with simvastatin and panitumumab in CRC patients with a *KRAS* mutation in tumour tissue, testing the theoretical concept of *KRAS* modulation by statins. As only one out of 14 patients was alive and free from progression at time of the primary endpoint, study enrolment was terminated after the first stage of the study and it was concluded that simvastatin does not render sensitivity to panitumumab in this specific population.

The current study is not the first to hypothesize on statins and their inhibitory effect on the activity of RAS and its downstream pathway. However, all but one previous report are on preclinical research. Lovastatin was shown to inhibit RAS activation in *KRAS* transformed thyroid cells through inhibition of its farnesylation, and thereby inhibiting activity of the downstream pathway [26]. Furthermore, it was shown that lovastatin and simvastatin inhibit downstream activity in breast cells with mutated *HRAS*, known to induce an invasive phenotype, possibly by inhibiting membrane localization of *HRAS*. The effect was reversed by farnesyl pyrophosphate, indicating the effect was related to prenylation of RAS [27]. More recently, simvastatin was shown to restore cetuximab resistance *in vitro* and *in vivo* [28]. Based on these results, it may be questioned if a higher dose of simvastatin would have been necessary to overrule *KRAS* mutation and render sensitivity to EGFR inhibitor therapy. As mentioned above, statin doses up to 35mg/kg/day have been prescribed in clinical trials, though higher doses were not used continuously as was essential in the current design. Preclinical data research showed a significant reduction in cell growth of *KRAS* mutant CRC cell lines using 0.2  $\mu$ M simvastatin, the equivalent of 2 mg/kg/day in humans [28]. Moreover, in cardiovascular disease the registered dose of 80 mg of simvastatin is significantly lowering cholesterol serum levels. It is reasonable to assume that this dose will also affect the formation of the C15 and C17 groups and subsequently the prenylation of the *KRAS* protein. Furthermore, we question whether higher doses will be feasible in terms of safety.

The lack of effect in the current study is in striking contrast with the original reported data by Lee et al [29], testing the addition of simvastatin 40mg once daily to third-line therapy with cetuximab plus irinotecan in CRC patients harbouring a *KRAS* mutation. Their original report showed indeed a low response rate ((one out of 52 patients had a partial remission), however PFS was 7.6 months, which is even higher than historical results of third-line cetuximab plus irinotecan in *KRAS* wild type CRC patients [30;31]. However, in a recent erratum Lee et al [32] reported corrected measurements of PFS in their population. Corrected mean PFS was 3.7 months (range 2.1-5.3), significantly lower than previous reports of cetuximab plus irinotecan as third-line therapy in *KRAS* wild type [30;31]. In summary, both our study as well as the study by Lee et al show that simvastatin does not render sensitivity to EGFR inhibitor therapy.

Mutational status of *PIK3CA* is also related to response to EGFR inhibitor based therapy. The majority of *PIK3CA* mutations are located in exon 9 and exon 20, and those mutations may occur in patients with or without *KRAS* mutation in tumour tissue. Only *PIK3CA* mutations in codon 20 are associated with lower ORR and PFS [4]. If statins would be able to induce a *KRAS* wild type phenotype in our population, a high incidence of *PIK3CA* mutations might still lead to low PFS. However, since only two patients harboured a *PIK3CA* mutation (one in exon 9 and one in exon 20), this is not likely to (partly) explain the results of the current study.

Toxicity of this dose of simvastatin in CRC patients failing standard chemotherapy was relatively mild, with only two patients in need for dose reduction and only one patients experiencing severe myopathy. Panitumumab was also well tolerated, in line with previous data of panitumumab as third-line therapy [2].

## Conclusion

The present study showed that simvastatin 80 once daily does not render sensitivity to panitumumab in CRC patients with a *KRAS* mutation failing oxaliplatin, 5-FU and irinotecan based therapy. The theoretical concept of *KRAS* modulation using statins does not seem feasible in the clinic. Recently, regorafenib was registered for these patients (and for *KRAS* wild type patients after failing third-line therapy with an EGFR inhibitor), however PFS gain is limited [33]. New therapeutic strategies for these patients are needed.

## References

- 1 Jonker DJ, O'Callaghan CJ, Karapetis CS, Zalcborg JR, Tu D, et al. (2007) Cetuximab for the treatment of colorectal cancer. *N Engl J Med* 357: 2040-2048.
- 2 Van Cutsum E, Peeters M, Siena S, Humblet Y, Hendlisz A, et al. (2007) Open-label phase III trial of panitumumab plus best supportive care compared with best supportive care alone in patients with chemotherapy-refractory metastatic colorectal cancer. *J Clin Oncol* 25: 1658-1664.
- 3 Amado RG, Wolf M, Peeters M, Van CE, Siena S, et al. (2008) Wild type KRAS is required for panitumumab efficacy in patients with metastatic colorectal cancer. *J Clin Oncol* 26: 1626-1634.
- 4 De Roock W, Claes B, Bernasconi D, De SJ, Biesmans B, et al. (2010) Effects of KRAS, BRAF, NRAS, and PIK3CA mutations on the efficacy of cetuximab plus chemotherapy in chemotherapy-refractory metastatic colorectal cancer: a retrospective consortium analysis. *Lancet Oncol* 11: 753-762.
- 5 Karapetis CS, Khambata-Ford S, Jonker DJ, O'Callaghan CJ, Tu D, et al. (2008) KRAS mutations and benefit from cetuximab in advanced colorectal cancer. *N Engl J Med* 359: 1757-1765.
- 6 Sorich MJ, Wiese MD, Rowland A, Kichenadasse G, McKinnon RA, et al. (2014) Extended RAS mutations and anti-EGFR monoclonal antibody survival benefit in metastatic colorectal cancer: a meta-analysis of randomized, controlled trials. *Ann Oncol* .
- 7 Krens LL, Baas JM, Gelderblom H, Guchelaar HJ. (2010) Therapeutic modulation of KRAS signaling in colorectal cancer. *Drug Discov Today* 15: 502-516.
- 8 Swanson KM, Hohl RJ. (2006) Anti-cancer therapy: targeting the mevalonate pathway. *Curr Cancer Drug Targets* 6: 15-37.
- 9 Graf H, Jungst C, Straub G, Dogan S, Hoffmann RT, et al. (2008) Chemoembolization combined with pravastatin improves survival in patients with hepatocellular carcinoma. *Digestion* 78: 34-38.
- 10 Han JY, Lim KY, Yu SY, Yun T, Kim HT, et al. (2011) A phase 2 study of irinotecan, cisplatin, and simvastatin for untreated extensive-disease small cell lung cancer. *Cancer* 117: 2178-2185.
- 11 Han JY, Lee SH, Yoo NJ, Hyung LS, Moon YJ, et al. (2011) A randomized phase II study of gefitinib plus simvastatin versus gefitinib alone in previously treated patients with advanced non-small cell lung cancer. *Clin Cancer Res* 17: 1553-1560.
- 12 Hong JY, Nam EM, Lee J, Park JO, Lee SC, et al. (2014) Randomized double-blinded, placebo-controlled phase II trial of simvastatin and gemcitabine in advanced pancreatic cancer patients. *Cancer Chemother Pharmacol* 73: 125-130.
- 13 Kawata S, Yamasaki E, Nagase T, Inui Y, Ito N, et al. (2001) Effect of pravastatin on survival in patients with advanced hepatocellular carcinoma. A randomized controlled trial. *Br J Cancer* 84: 886-891.
- 14 Kim WS, Kim MM, Choi HJ, Yoon SS, Lee MH, et al. (2001) Phase II study of high-dose lovastatin in patients with advanced gastric adenocarcinoma. *Invest New Drugs* 19: 81-83.
- 15 Knox JJ, Siu LL, Chen E, Dimitroulakos J, Kamel-Reid S, et al. (2005) A Phase I trial of prolonged administration of lovastatin in patients with recurrent or metastatic squamous cell carcinoma of the head and neck or of the cervix. *Eur J Cancer* 41: 523-530.
- 16 Konings IR, van der Gaast A, van der Wijk LJ, de Jongh FE, Eskens FA, et al. (2010) The addition of pravastatin to chemotherapy in advanced gastric carcinoma: a randomised phase II trial. *Eur J Cancer* 46: 3200-3204.
- 17 Lee J, Jung KH, Park YS, Ahn JB, Shin SJ, et al. (2009) Simvastatin plus irinotecan, 5-fluorouracil, and leucovorin (FOLFIRI) as first-line chemotherapy in metastatic colorectal patients: a multicenter phase II study. *Cancer Chemother Pharmacol* 64: 657-663.
- 18 Lersch C, Schmelz R, Erdmann J, Hollweck R, Schulte-Frohlinde E, et al. (2004) Treatment of HCC with pravastatin, octreotide,

- or gemcitabine--a critical evaluation. *Hepatogastroenterology* 51: 1099-1103.
- 19 Manoukian GE, Tannir NM, Jonasch E, Qiao W, Haygood TM, et al. (2011) Pilot trial of bone-targeted therapy combining zoledronate with fluvastatin or atorvastatin for patients with metastatic renal cell carcinoma. *Clin Genitourin Cancer* 9: 81-88.
  - 20 Ahmed TA, Hayslip J, Leggas M. (2013) Pharmacokinetics of high-dose simvastatin in refractory and relapsed chronic lymphocytic leukemia patients. *Cancer Chemother Pharmacol* 72: 1369-1374.
  - 21 Hus M, Grzasko N, Szostek M, Pluta A, Helbig G, et al. (2011) Thalidomide, dexamethasone and lovastatin with autologous stem cell transplantation as a salvage immunomodulatory therapy in patients with relapsed and refractory multiple myeloma. *Ann Hematol* 90: 1161-1166.
  - 22 van der Spek E, Bloem AC, Sinnige HA, Lokhorst HM. (2007) High dose simvastatin does not reverse resistance to vincristine, adriamycin, and dexamethasone (VAD) in myeloma. *Haematologica* 92: e130-e131.
  - 23 van Eijk R, Licht J, Schrupf M et al. Rapid KRAS, EGFR, BRAF and PIK3CA mutation analysis of fine needle aspirates from non-small-cell lung cancer using allele-specific qPCR. *PLoS.One.* 2011; 6: e17791.
  - 24 Tol J, Nagtegaal ID, Punt CJ. BRAF mutation in metastatic colorectal cancer. *N.Engl.J.Med.* 2009; 361: 98-9.
  - 25 Simon R. (1989) Optimal two-stage designs for phase II clinical trials. *Control Clin Trials* 10: 1-10.
  - 26 Laezza C, Fiorentino L, Pisanti S, Gazzero P, Caraglia M, et al. (2008) Lovastatin induces apoptosis of KRAS-transformed thyroid cells via inhibition of ras farnesylation and by modulating redox state. *J Mol Med (Berl)* 86: 1341-1351.
  - 27 (Kang S, Kim ES, Moon A. (2009) Simvastatin and lovastatin inhibit breast cell invasion induced by H-Ras. *Oncol Rep* 21: 1317-1322.
  - 28 Lee J, Lee I, Han B, Park JO, Jang J, et al. (2011) Effect of simvastatin on cetuximab resistance in human colorectal cancer with KRAS mutations. *J Natl Cancer Inst* 103: 674-688.
  - 29 Lee J, Hong YS, Hong JY, Han SW, Kim TW, et al. (2014) Effect of simvastatin plus cetuximab/irinotecan for KRAS mutant colorectal cancer and predictive value of the RAS signature for treatment response to cetuximab. *Invest New Drugs* 32: 535-541.
  - 30 Sohn BS, Kim TW, Lee JL, Ryu MH, Chang HM, et al. (2009) The role of KRAS mutations in predicting the efficacy of cetuximab-plus-irinotecan therapy in irinotecan-refractory Korean metastatic colorectal cancer patients. *Oncology* 77: 224-230.
  - 31 Spindler KL, Pallisgaard N, Lindebjerg J, Frifeldt SK, Jakobsen A. (2011) EGFR related mutational status and association to clinical outcome of third-line cetuximab-irinotecan in metastatic colorectal cancer. *BMC Cancer* 11: 107.
  - 32 Lee J, Hong YS, Hong JY, Han SW, Kim TW, et al. (2014) Erratum to: Effect of simvastatin plus cetuximab/irinotecan for KRAS mutant colorectal cancer and predictive value of the RAS signature for treatment response to cetuximab. *Invest New Drugs* .
  - 33 Tejpar S, Celik I, Schlichting M, Sartorius U, Bokemeyer C, et al. (2012) Association of KRAS G13D tumor mutations with outcome in patients with metastatic colorectal cancer treated with first-line chemotherapy with or without cetuximab. *J Clin Oncol* 30: 3570-3577.
  - 34 Grothey A, Van CE, Sobrero A, Siena S, Falcone A, et al. (2013) Regorafenib monotherapy for previously treated metastatic colorectal cancer (CORRECT): an international, multicentre, randomised, placebo-controlled, phase 3 trial. *Lancet* 381: 303-312.